



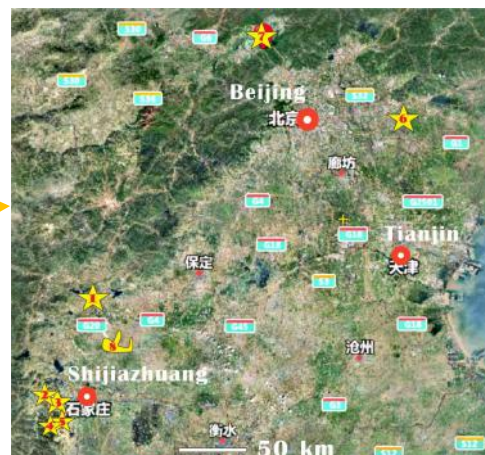
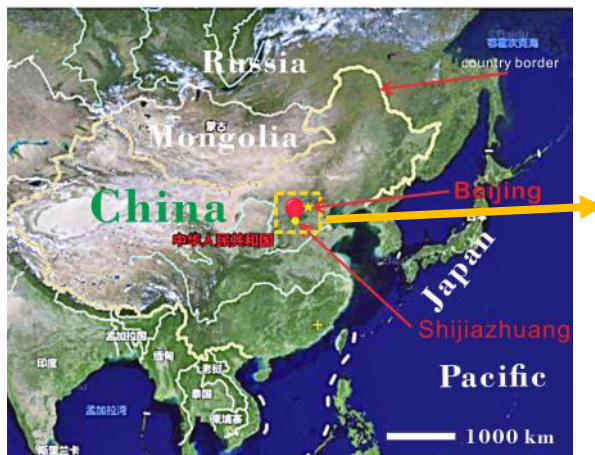
The 1st International Biopetrological Congress

CIRCULAR 4

Sponsored by IBA, and organized by 17 institutions, the 1st International Biopetrological Congress will be held in Shijiazhuang, China, on September 22-25, 2023, and you are invited to attend this congress, give oral presentations or posters, and enjoy the field trips.

Venue

As the capital city of Hebei Province, China, Shijiazhuang was selected as the venue of the congress since there are a lot of wonderful outcrops of Precambrian and Cambrian microbialites near it. It is very near to Beijing (~300 km NE), the capital of China.



Several microbialite profiles as the field trips. ☆1, 3, 6: Mesoproterozoic microbialite sequences. ☆2: Palaeoproterozoic microbialite sequence (2500 Ma old). ☆4, 5: Cambrian microbialite sequences. ☆7: the Great Wall. ☆8: The Shijiazhuang Zhengding International Airport.

The congress will be held in the Taihang State Guesthouse (Fig. a, b) in downtown Shijiazhuang. It is about 5 km away from the Shijiazhuang High-speed Railway Station, and 38 km from the Zhengding International Airport.



Conference Programs

The scientific programs of the congress include: (1) pre-conference short course, (2) plenary presentations, (3) oral presentations, (4) poster sessions, (5) awarding ceremony, (6) mid-conference field trip, and (7) post-conference field trips.

Conference Agenda

September 22	Pre-conference lecture; Full day check-in
September 23	Opening ceremony and invited plenary presentations in the morning, and invited plenary presentations in the afternoon
September 24	Mid-conference field trip in the morning, and invited plenary presentations in the afternoon
September 25	Session presentations in the morning, and session presentations and closing ceremony in the afternoon
September 26	Departure for post-conference field trips

Invited Plenary Presentations

(1) Microbial weathering of black chimneys at the mid-ocean ridges

—by **Xi-Qiu Han**, a famous research fellow of the Second Institute of Oceanology, Ministry of Natural Resources, and a chief scientist in oceanic research in China.

(2) Advances in the study of life on Mars

-
- by **Giorgio Bianciardi**, a famous professor at University of Siena, Italy.
- (3) [Evidence for microbial origin of BIF \(banded iron formation\)](#)
—by **Yi-Liang Li**, a famous professor at University of Hong Kong.
- (4) [Advances in research of modern microbialites in the Bahamas](#)
—by **Robert Riding**, a famous professor at the University of Tennessee, USA, and an internationally renowned scholar on microbialites.
- (5) [Progress in research of modern microbialites in Australia](#)
—by **Robert Burne**, a famous professor at the University of Queensland, Australia, and an internationally famous scholar on microbialites.
- (6) [Progress in research of mechanism of the global carbon cycle](#)
—by **Li-Yuan Liang**, the chief scientist at Oak Ridge National Laboratory, USA.
- (7) [Advances in research of genesis of dolomites](#)
—by **Hai-Ruo Qing**, a professor at the University of Regina, Canada, and an internationally famous expert on dolomites.
- (8) [Progress in research of microbial dolomites](#)
—by **Hong-Mei Wang**, a famous professor at the China University of Geosciences (Wuhan).
- (9) [Progress in study of early microbial communities on Earth](#)
—by **Dominic Papineau**, a famous professor at University College London.
- (10) [Advances in study of the evolution of early life](#)
—by **Shu-Hai Xiao**, a famous professor at Virginia Tech University, and an academician of the National Academy of Sciences of the USA.
- (11) [Evolution of marine ecosystem and origin of mineral skeletons during the Ediacaran-Cambrian transition: pattern and drivers](#)
—by **Rachel Wood**, a famous professor at the University of Edinburgh, United Kingdom, and a fellow of the Royal Society.
- (12) [Origins of modern travertines in World Nature Heritage Jiuzhaigou and Huanglong Natural Reserve](#)
—by **Hai-Long Sun**, an associate professor at Institute of Geochemistry, Chinese Academy of Sciences.
- (13) [Genesis of microbial travertine in China and their protection](#)
—by **Qun-Wei Dai**, a famous professor at the Southwest University of Science and Technology, Secretary-General of the World Travertine Natural Heritage Research and Protection Alliance.
- (14) [The energy basis and molecular mechanism of deep-time iron and manganese mineral-microbe co-evolution](#)
—by **Juan Liu**, a research fellow at Peking University, distinguished younger scientist.
- (15) [Interaction of microbes and minerals and their co-evolution: mechanisms and applications](#)
—by **Hai-Liang Dong**, a famous professor at China University of Geosciences (Beijing), Director of Geomicrobiological Committee of the Chinese Society of Microbiology.
- (16) [Impacts of volcanic eruptions on paleoclimates](#)
—by **Zheng-Fu Guo**, a research fellow at Institute of Geology and Geophysics, Chinese Academy of Sciences, and an distinguished younger scientist.
- (17) [Progresses in study of classification and ecology of cyanobacteria](#)
—by **Gong-Liang Yu**, an associate research fellow at Institute of Hydrobiology, Chinese Academy of Sciences, and a famous expert in cyanobacterial taxonomy.
- (18) [A blueprint for the development of the discipline biopetrology](#)
—by **Ya-Sheng Wu**, the President of the Academic Committee of the International Biopetrological Association, and an professor at University of Chinese Academy of Sciences.
-

(19) [Late Paleozoic glaciation and reef evolution](#)

—by **Le Yao**, an associate research fellow at Nanjing Institute of Geology and Palaeontology, Chinese Academy of Sciences.

(20) [New techniques for analysis of carbonate rocks](#)

—by **An-Ping Hu**, a professor at Hangzhou Geological Research Institute of Petrochina.

(21) [Introduction to the International Society of Palaeogeography](#)

—by **Sheng-He Wu**, a famous professor at China University of Petroleum, and the president of the International Society of Palaeogeography.

(22) [Introduction to the microbialites near Shijiazhuang](#)

—by **Hong-Xia Jiang**, an assistant research fellow at Hebei GEO University.

Sessions

The time for the oral presentations in all sessions is limited to **20 minutes**. Currently, the following 13 academic sessions have been organized, and those with less than 10 oral presentations will be merged:

[Session 1: Advances in geomicrobiology and studies of biomineralization](#)

Convenors: **Xian-Cai Lu** (a professor at Nanjing University), **Hai-Liang Dong** (a professor at China University of Geosciences (Beijing), and the Director of Geomicrobiological Committee of Chinese Society of Microbiology), **Jin-Hua Li** (a research fellow at Institute of Geology and Geophysics, Chinese Academy of Sciences), **Hua-Xiao Yan** (an associate professor at Shandong University of Science and Technology), **Luisa I. Falcon** (a research fellow at National University of Mexico, and a member of the Academic Committee of IBA).

[Session 2: Classification, evolution and rock-building history of bacteria and algae](#)

Convenors: **Ke Pang** (a research fellow at Nanjing Institute of Geology and Palaeontology, Chinese Academy of Sciences, and the Secretary General of Fossil Algae Committee of Paleontological Society of China), **Robert Riding** (a professor at the University of Tennessee, USA, and a member of the Academic Committee of IBA), **Peng-Ju Liu** (a research fellow at Institute of Geology, Chinese Academy of Geological Sciences), **Gong-Liang Yu** (an associate research fellow at Institute of Hydrobiology, Chinese Academy of Geological Sciences), **Li-Jing Liu** (an associate professor at Northwest University).

[Session 3: Advances in studies of travertines and modern microbial rocks](#)

Convenors: **Hai-Long Sun** (an associate research fellow at Institute of Geochemistry, Chinese Academy of Sciences), **Qun-Wei Dai** (a professor at Southwest University of Science and Technology), **Hao Yan** (an assistant professor at Nanjing University).

[Session 4: Temporal and spatial distributions, formation mechanisms and resource significance of deep-time microbial rocks](#)

Convenors: **Zuo-Zhen Han** (a professor at Shandong University of Science and Technology, and a member of the Academic Committee of IBA), **Hong-Wei Kuang** (a research fellow at the Chinese Academy of Geological Sciences, and a member of the Academic Committee of IBA), **Robert V. Burne** (a professor at the University of Queensland, Australia), **Michael Steiner** (associate research fellow at Freie Universität Berlin).

[Session 5: Biological and microbial structures in deep-time clastic rocks including MISS](#)

Convenors: **Yong-An Qi** (a professor at Henan Polytechnic University, and a member of the Academic Committee of IBA), **Zhong-Wu Lan** (an associate research fellow at Institute of Geology and Geophysics, Chinese Academy of Sciences), **Subir Sarkar** (a professor at Jabalpur University, India, and a member of the Academic Committee of IBA).

Session 6: Structures of modern reef systems and their interaction with environments

Convenors: **Ke-Fu Yu** (a professor at Guangxi University), **Tian-Ran Chen** (a research fellow of South China Sea Institute of Oceanology, Chinese Academy of Sciences).

Session 7: Evolution of deep-time reef ecosystems and their interactions with environments

Convenors: **Le Yao** (an associate research fellow at Nanjing Institute of Geology and Palaeontology, Chinese Academy of Sciences, and a member of the Academic Committee of IBA), **En-Pu Gong** (an professor at Northeastern University, and a member of the Academic Committee of IBA), **Markus Aretz** (an professor at Paul Sabatier University, France), **Xue-Song Tian** (an associate research fellow at Chongqing Institute of Geology and Mineral Resources).

Session 8: Genesis of dolomites and advances in studies of microbial dolomites

Convenors: **Hong-Mei Wang** (a professor at China University of Geosciences (Wuhan), and a member of Geomicrobiology Sub-committee of Chinese Society of Microbiology), **Dominic Papineau** (an associate professor at University College London, and a member of the Academic Committee of IBA), **Deng Liu** (a professor at China University of Geosciences (Wuhan)).

Session 9: Formation and spatial and temporal distribution of biolith-related reservoirs

Convenors: **Zhi-Liang He** (a professor at Sinopec Research Institute of Exploration and Development), **An-Jiang Shen** (a professor at Hangzhou Geological Research Institute of Petrochina), **Ming-Yi Hu** (a professor at Yangtze University), **Xiu-Fen Zhai** (a senior engineer at Research Institute of Petroleum Exploration and Development of Petrochina).

Session 10: Genesis of BIFs and large manganese ores: biotic vs abiotic

Convenors: **Yi-Liang Li** (a professor at University of Hong Kong), **Wen-Chao Yu** (a professor at China University of Geosciences (Wuhan)), **Xiu-Qing Yang** (an associate professor at Chang An University).

Session 11: Evolution of ancient oceanic systems and formation of large ores

Convenors: **Chun-Fang Cai** (a research fellow at Institute of Geology and Geophysics, Chinese Academy of Sciences), **Xian-Guo Lang** (a professor at Chengdu University of Technology), **Xin-Qiang Wang** (a professor at the China University of Geosciences (Beijing)).

Session 12: Origins of carbonate micrite and recent advances in carbonate sedimentology

Convenors: **Yue-Feng Shen** (an associate professor at Hefei University of Technology, and a member of the Academic Committee of IBA), **Jian-Gong Wang** (a professor at Northwest Branch of China Petroleum Research Institute of Petrochina), **Fritz Neuweiler** (a professor at Laval University, Canada).

Session 13: Black rocks and source rocks and evolution of Earth system and carbon cycle

Convenors: **Guang-You Zhu** (a professor at Research Institute of Exploration and Development of Petrochina), **Zhi-Fei Zhang** (a professor at Northwest University), **Xiao-Min Xie** (a professor at Yangtze University).

Mid-conference Field Trip



Trip 1:

(1 day; free; leader: Hong-Xia Jiang and Zhen-Liang Guo) -- To visit a Mesoproterozoic microbialite profile near Shijiazhuang. It is featured with exquisite stromatolites, especially the coniform stromatolites (Fig. 1). Photographing and specimen collecting are permitted.

Post-conference Field Trips

Trip 2:

(3 days; leader: Hong-Xia Jiang and Zheng Liang Guo) -- To visit three Paleoproterozoic and Mesoproterozoic microbialite profiles and two Cambrian microbialite profiles near Shijiazhuang. In addition to columnar and conical stromatolites, there are herringbone-like (Fig. 2), mushroom-like and dendritic stromatolites (Fig. 3). Photographing and sample collecting are permitted.



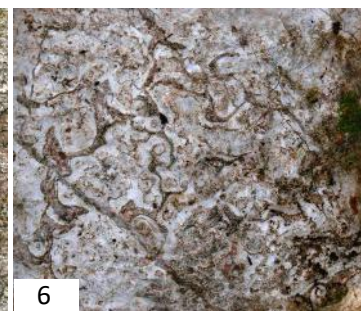
Palaeoproterozoic herringbone-like stromatolites



Cambrian dendritic stromatolites

Trip 3:

(4 days; leader: Prof. Wen-Qing Pan, Senior engineer Xiu-Fen Zhai) -- To visit the Mesoproterozoic microbialite profiles in the Jixian National Geopark. The profiles are worldwide famous, with large thickness, good exposure and exquisite microbialites (Fig. 4). Professor Robert Riding and many other scholars have studied them and published articles on them. Sampling is subject to approval.



Trip 4:

(4 days; leader: Associate Prof. Xue-Song Tian) -- To visit the world's only Permian Lopingian coral reefs (Fig. 5), calcisponge reefs (Fig. 6), mysterious and controversial P-T boundary "microbialites", the cyanobacterial castostone (Fig. 7) in Cili, Hunan Province. It is only 1.3 hours' drive away from the famous World Natural Heritage Zhangjiajie National Park. Photographing and sample collecting are permitted.

Trip 5:

(5 days; leader: Research fellow Tian-Ran Chen) -- To visit the colorful modern coral reefs at Sanya and the Ximao and Dongmao islands, Hainan Province, China (Fig. 8, 9). They are excellent places to survey the interaction between modern coral reef ecosystems and environments, and marine biodiversity. Sampling is subject to approval.



※ More than 15 participants are required for each trip. The conference will arrange and afford the travels and accommodations for these trips.

Publication of Abstracts

The congress will compile an abstract collection. All attendees are encouraged to submit one or more abstracts. The abstracts should be in English, and include title, author's name, affiliation, email address, and text. Inserted figures are permitted. Please send your abstracts (word files) to biopetrology@qq.com.

High quality abstracts will be published in [Biopetrology](https://biopetrology.com), a peer reviewed international journal sponsored by the International Biopetrological Association (IBA), depending on the review results by members of the Academic Committees. The website of [Biopetrology](https://biopetrology.com) is <https://biopetrology.com>.

Excellent Presentation Awards for Students

Excellent Presentation Awards for Graduate and Undergraduate Students are selected from the oral presentations and posters by the Academic Committees of IBC. The number of the awards will be 1/10 of the oral presentations and posters by students. The winners will be awarded a certificate and a bonus of 1,500 CNY. In today's rate, 1 USD = 6.9 CNY.

Publication of Papers

All attendees are encouraged to submit research reports 3-25 page long for publication in the journal **Biopetrology** or **Journal of Palaeogeography**, based on peer-review results.

Please send your manuscript (word file with inserted figures) to biopetrology@qq.com.

Accommodation



The venues, accommodation and catering services are all in the five-star hotel, Taihang State Guesthouse in downtown Shijiazhuang, and the special price of the big-bed room and the two-bed room is 450 CNY and 350 CNY, respectively. Attendees are requested to submit their accommodation requirements on computer in: <https://biopetrology.com/accom>

or send their accommodation requirements to biopetrology@qq.com via email as early as possible so that the conference can reserve a room for you.

Fees of Registration and Field Trips

Services	Fee names	March to July (CNY)	August (CNY)	Sept. (CNY)
Registration	Fee 1a	2200	2300	2500
Registration (student)	Fee 1b	1500	1600	1800
Trip 2 (Near Shijiazhuang)	Fee 2a	1200	1300	1500
Trip 2 (Near Shijiazhuang) (student)	Fee 2b	800	900	1100
Trip 3 (Jixian)	Fee 3a	2450	2550	2650
Trip 3 (Jixian) (student)	Fee 3b	1900	2000	2100
Trip 4 (Cili Permian reefs)	Fee 4a	3200	3300	3400
Trip 4 (Cili Permian reefs) (student)	Fee 4b	2200	2300	2400
Trip 5 (Modern reefs)	Fee 5a	6500	6600	6700
Trip 5 (Modern reefs) (student)	Fee 5b	4500	4600	4700

-
- ◆ Attendees can pay fees in CNY, USD, euros, and other currencies at the exchange rates: 1USD = 6.9 CNY, 1 euros = 7.3 CNY.
 - ◆ Fees can be paid in three ways:
 - (1) Pay fees to: Bank name: Bank of China Shanghai Jiangchuan Road Branch. Account Name: Shanghai Chidu Conference and Exhibition Service Co. LTD. Account Number: 445584157230.
 - (2) Do it in the website <https://biopetrology.com/pay>.
 - (3) Pay fees in the reception hall of the Taihang State Guesthouse in Shijiazhuang.
 - ◆ After you pay your fees, please fill in the table in the website <https://biopetrology.com/pay> with your name, affiliation, fee name, and amount, and submit it, or send these information to biopetrology@qq.com.
 - ◆ If you attend the conference online, you do not need to pay fees, but need to register in the website <http://biolithos.com/regis>.

Refund Policy

The attendees who have registered and paid the fees, if unable to attend the conference or field trips for some reasons, can get a full refund through sending an email to biopetrology@qq.com.

Financial Aids

The conference will provide financial aids to the attendees whose one-way travel cost is >3000 CNY (= 434 USD). Applicants are requested to send an application to biopetrology@qq.com. The decision on aids will be made by the Organizing Committees of the conference. The registered overseas scholars can participate in the conference online.

Sponsor

The International Biopetrological Association (IBA) and Hebei GEO University.

Organizers

- (1) Hebei Key Laboratory of Strategic Critical Mineral Resources
- (2) Henan Polytechnic University
- (3) Shandong Provincial Key Laboratory of Sedimentary Mineralization and Sedimentary Minerals
- (4) Northwest Branch of Research Institute of Petroleum Exploration and Development of Petrochina
- (5) Institute of Geology and Geophysics, Chinese Academy of Sciences
- (6) Nanjing Institute of Geology and Paleontology, Chinese Academy of Sciences

Co-organizers

- | | |
|--|---|
| (1) Chengdu University of Technology | (6) Northeastern University |
| (2) China University of Geosciences (Wuhan) | (7) Northwest University |
| (4) Guangxi University | (8) Shandong University of Science and Technology |
| (2) Hefei University of Technology | (9) Southwest Petroleum University |
| (5) National Natural Science Foundation of China | (10) Yangtze University |

Organizing Committee

Chairman

Bin Wang (Professor, Vice President of Hebei GEO University)

Secretary-general

Ya-Sheng Wu (Professor, Chairman of the Academic Committee of IBA)

Deputy Secretaries General

Zuo-Zhen Han, Hong Hua, Qiang Ji, Hongwei Kuang, Xian-Guo Lang, Ying-Jie Li, Yong-An Qi, Yue-Fen Shen, Jian-Gong Wang

Members

An-Jiang Shen, Ao-Ran Liu, Bogusław Kołodziej, Chunfang Cai, Dominic Papineau, Deng Liu, En-Pu Gong, Fritz Neuweiler, Giorgio Bianciardi, Gong-Liang Yu, Guang-You Zhu, Hai-Liang Dong, Hai-Long Sun, Hao Yan, Hong-Mei Wang, Hong-Xia Jiang, Hua-Xiao Yan, Jin-Hua Li, Jing-Jie Cao, Ke Pang, Ke-Fu Yu, LeYaoi, Li-Fu Tian, Li-Jing Liu, Luisa I. Falcon, Markus Aretz, Michael Steiner, Ming-Cai Hou, Ming-Yi Hu, Peng-Ju Liu, Qiang Ji, Robert Burne, Robert Riding, Su-Ping Ma, Subir Sarkar, Tian-Ran Chen, Wen-Chao Yu, Wen-Qing Pan, Wen-Sheng Wu, Xian-Cai Lu, Xiao-Min Xie, Xiu-Cheng Tan, Xiu-Juan Zheng, Xin-Qiang Wang, Xiu-Fen Zhai, Xiu-Juan Zheng, Xiu-Qing Yang, Xue-Song Tian, Yi-Liang Li, Ying-Jie Li, Yong-Li Zhang, Yuan Wang, Yue Li, Zhen-Liang Guo, Zhi-Fei Zhang, Zhi-Liang Dong, Zhi-Liang He, Zhong-Wu Lan.

Academic Committee

Academic Advisor General

Shu-Cheng Xie (Academician of Chinese Academy of Sciences, Professor at China University of Geosciences (Wuhan))

Chairs

Ya-Sheng Wu (Chairman of IBA, Professor at University of Chinese Academy of Sciences)

Robert Riding (Professor at the University of Tennessee, USA)

Rachel Wood (Fellow of the Royal Society, Professor at University of Edinburg, UK)

Dominic Papineau (Professor at University College London, UK)

Luisa I. Falcón (Research Fellow at National Autonomous University of Mexico, Mexico)

Members

Abigail C. Allwood (USA), **Achim Wehrmann** (Germany), **An-Jiang Shen** (China), **Brian Jones** (Canada), **Christophe Dupraz** (Sweden), **Chun-Fang Cai** (China), **Concha Arenas** (Spain), **Deng Liu** (China), **Dong-Jie Tang** (China), **Emmanuelle Vennin** (France), **En-Pu Gong** (China), **Edoardo Perri** (Italy), **Fei Li** (China), **Fumito Shiraishi** (Japan), **Giorgio Bianciardi** (Italy), **Gerraint Wyn Hughes** (UK), **Gong-Liang Yu** (China), **Guang-You Zhu** (China), **Hai-Liang Dong** (China), **Hai-Ruo Qing** (Canada), **Hong-Mei Wang** (China), **Hong Hua** (China), **Hong-Wei Kuang** (China), **Hong-Xia Jiang** (China), **Jeong-Hyun Lee** (Korea), **Ji-Tao Chen** (China), **Jin-Hua Li** (China), **Karim Benzerara** (France), **Ke Pang** (China), **Ke-Fu Yu** (China), **Le Yao** (China), **Ming-Cai Hou** (China), **Ming-Xiang Mei** (China), **Ming-Yi Hu** (China), **Peng-Ju Liu** (China), **Pieter T. Visscher** (USA), **R. P. Reid** (USA), **Ricardo J. Jahnert** (Brazil), **Robert Burne** (Australia), **Robert Riding** (USA), **Qiang Ji** (China), **Shu-Hai Xiao** (USA), **Subir Sarkar** (India), **Tadeusz Marek Peryt** (Poland), **Tian-Ran Chen** (China), **Xian-Cai Lu** (China), **Xian-Guo Lang** (China), **Xiu-Cheng Tan** (China), **Yue-Feng Shen** (China), **Yi-Liang Li** (Hongkong, China), **Yin-Ye Wu** (China), **Yong-An Qi** (China), **Zai-Hua Liu** (China), **Zhi-Fei Zhang** (China), **Zhi-Liang He** (China), **Zuo-Zhen Han** (China).

Important Dates

Submit abstracts	March 5 to September 15, 2023
Register	March 5 to September 24, 2023
Pay fees	March 5 to September 24, 2023

Registration

You can register in three ways:

- (1) To register through the congress website <https://biopetrology.com/regis> on your PC,
- (2) To send your registration information to biopetrology@qq.com,
- (3) To register in the hall of the hotel, Taihang State Guesthouse, which is pronounced as “tahun guo bin guan”.

Transportation Guide

① Beijing West Railway Station → Shijiazhuang High-speed Railway Station:

It is 1 hour for the fastest high-speed train. It is better to buy the ticket 1 to 2 days in advance in the mobile phone app named 12306.

② Shijiazhuang High Speed Railway Station → Taihang State Guesthouse:

The distance is 5.3 km. You can follow the arrow on the ground to the taxi station to take a taxi

and drop at the Taihang State Hotel.

③ Shijiazhuang Zhengding Airport → Taihang State Hotel:

The distance is 38.5 km. You can take a taxi to the Taihang State Guesthouse, or take a airport bus and get off at the Zhengding Stop, then change to bus No. 201 and get off at the Beiguo Mall Stop, and then change to bus No. 6 and get off at the Bailou Hotel Stop.

Contact Information

Please send abstracts, applications or other messages to biopetrology@qq.com.

Mobile phone and Wechat:

+86-10-18618382036 (Hong-Xia Jiang), +86-10-19933071917 (Ao-Ran Liu) , +86-10-18032066002 (Zhi-Yuan Zhang)

Letter of Invitation:

Available in the website of 1stIBC

Email:

biopetrology@qq.com.

Website:

<http://biopetrology.com/1stIBC> (for PC)

<http://biopetrology.com/1IBC> (for mobile phone, simplified)



If it is not convenient for you to register online, you can select the following text in the PDF of this Circular, copy it to Winword, fill in it, and email it to biopetrology@qq.com.

Attendance Receipt (registration information)

Name: _____, student (yes or not): _____

If employed, your affiliation: _____

If you are a student, your university/institute's name:

Address: _____

Phone or mobile phone: _____

Email: _____

Room types (price): _____

If it is a twin bed room, are you sharing (yes or no): _____

If you give oral presentation, the title: _____

You will attend which session: _____

You will give oral presentation or poster: _____

Whether to participate in the post-conference field trips, which trip: _____

If you have paid fees, the amount: _____, the date of payment: _____,

For what service (such as "registration fee + trip 2): _____

Date: _____